



# SP-500 Spray Adhesive

TECHNICAL DATA

**Excelsior SP-500 Spray Adhesive** is an acrylic aerosol pressure sensitive adhesive used for the installation of LVT, LVP and approved Rubber flooring products over porous and non-porous substrates in indoor applications; it is a low odor, non-flammable, solvent-free and ready to use product

<b>Product Type</b>	Acrylic Aerosol Pressure Sensitive Adhesive for porous (absorptive) and non-porous (non-absorptive) surfaces
<b>Characteristics</b>	White Aerosol
<b>Packaging</b>	22 oz. Canisters, 6 per Carton
<b>Sustainability Information</b>	<p>Made in the U.S.A.</p> <p>Meets Buy America Act (49 CFR Part 661)</p> <p>Meets Buy American Act (41 USC §§ 8301-8303)</p> <p>Contributes to LEED v4/4.1</p> <p>≤0.0 grams/liter VOC Content (SCAQMD RULE 1168)</p> <p>Meets SCAQMD Rule 1168 Requirements</p> <p>FloorScore Certified</p> <p>Meets CA 01350 Requirements</p> <p>Red List Chemical Free</p> <p>Contains No Recycled Content</p>
<b>Moisture Control Properties</b>	Not a moisture inhibitor or mitigation product
<b>ASTM F2170 - RH Limit</b>	90%, <i>in situ</i>
<b>ASTM F1869 - MVER Limit</b>	8 lbs. / 1000 sq. ft. / 24 hours
<b>ASTM F710 - pH Limit</b>	≥ 7 - ≤ 10
<b>ASTM D7149 - Freeze Thaw Stability</b>	Do Not Allow to Freeze
<b>ASTM D1337 - Shelf Life</b>	3 Years from Manufacturing Date
<b>Reading the Date Code</b>	020121
	Month (02) Day (01) Year (21)
	Located on the bottom of the can and front of the box
<i>Shelf Life depends on proper storage within service &amp; storage temperatures in unopened container</i>	
<b>ASTM D6004 - Adhesive Sheer Resistance</b>	Excellent
<b>ASTM D6862 - 90° Peel Resistance</b>	Excellent
<b>ASTM D7888 - Plasticizer Resistance</b>	Excellent
<b>California Prop 65</b>	To the best of our knowledge, this product does not contain any of the listed chemicals, which the state of California has found to cause cancer, birth defects or other reproductive harm

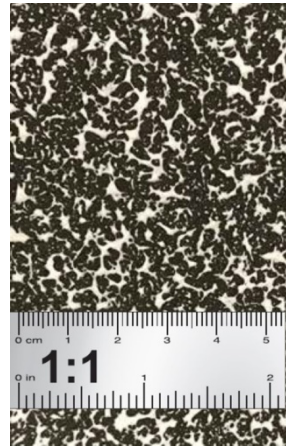
**Application Method**

Spray Applied

**Resilient Flooring Coverages**

**Rubber Tile** 100 Sq. Ft. per Unit  
**LVT & LVP Vinyl Tile** 150 Sq. Ft. per Unit

Proper Coverage is determined by marking an area of the square footage and emptying the contents of the canister evenly within that area



100 Square Feet



150 Square Feet

**Flash Time**

15-30 Minutes

**Working Time**

≤ 4 Hours

*Flash time and working time will vary with conditions; higher temps with higher humidity will be shorter than lower temps with lower humidity*

**Access Times During & After Installation**

**Heat Welding** Immediate  
**Light Foot Traffic** Immediate  
**Heavy Foot Traffic and Rolling Loads** 24 Hours  
**Maintenance** 48 Hours

**Service & Storage Temperature**

65° - 85° F

***The following information is provided as general guidance, always refer to the current installation information on the product website for the resilient flooring being installed for complete information***

**Approved Flooring Products**

Envire Rubber Sheet (Heat Welded Applications Only)  
 Envire Rubber Tile  
 Raised Disc Rubber Tile  
 LVT/LVP

**Approved Substrates & Surfaces**

Concrete above, on, or below grade; properly prepared for moisture sensitive resilient flooring in place a minimum of 45 days  
 APA rated plywood underlayment

---

## Approved Substrates & Surfaces...

Properly prepared Portland cement based patches & underlayments

Properly prepared Gypsum cement based underlayments

Properly prepared VCT, VAT, Quartz Tile, Solid Vinyl Tile, sheet goods

Ceramic tiles

Stone & Terrazzo tiles

Steel & Aluminum

Epoxy Mitigation & Sealers (100% solid and fully cured)

Stained concrete that is sound, smooth and free of waxes, cleaners and any other bond inhibiting substances

Radiant heated sub-floors

---

## Site Requirements

During acclimation, the site must be fully enclosed, weather tight, and material must be in the installation area with the HVAC system functional and operating at desired service temperatures for a period of 48 hours prior to installation, during the installation and for the service life of the installation afterwards.

It is recommended to maintain an ambient relative humidity between 40% and 60% for a period of 48 hours prior to installation, during the installation and for the service life of the installation afterwards.

---

## Substrate Requirements

All substrates must be prepared according to the following information or ASTM F710 or ASTM F1482 at a minimum, as well as applicable ACI and RFCI guidelines.

Concrete substrates, whether on-grade and/or below grade must have an intact and effective moisture vapor barrier which meets the current requirements of ASTM E1745

Substrates must be clean, smooth, permanently dry, flat, and structurally sound.

Substrates must be free of visible water or moisture, dust, sealers, paint, sweeping compounds, curing compounds, residual adhesives and adhesive removers, concrete hardeners or densifiers, solvents, wax, oil, grease, asphalt, visible alkaline salts or excessive efflorescence, mold, mildew and any other extraneous coating, film, material or foreign matter.

---

## Adhesive Clean-Up

Uncured Adhesive can be removed with solution of 70% isopropyl alcohol and a clean cloth

Cured adhesive will be difficult to remove from wall and flooring surfaces, ensure removal prior to curing



# SP-500 Spray Adhesive

TECHNICAL DATA

---

**Product & Substrate Restrictions**

Not designed for use with products manufactured with polyolefin, polyethylene, or polypropylene

Not designed for use on substrates that have been exposed to adhesive removers, solvents, or chemical cleaners

---

**Disposal**

Dispose in accordance with local, state and federal regulations.

Do not allow product to get into drains, watercourses or landfill.

Hardened product residues are considered construction waste.

Empty packaging is recyclable.

---

**Warranty**

1 Year Manufacturer's Warranty

Bond Warranty determined by Warranty of product being installed, see warranty document for details

---

**Technical Support**

[solutions@rhctechnical.com](mailto:solutions@rhctechnical.com)

---

**Product Support**

[solutions@rhctechnical.com](mailto:solutions@rhctechnical.com)

---

**Technical Documentation**

[www.excelsiorproducts.net](http://www.excelsiorproducts.net)

---